



RECOMMENDED INSTALLATION METHOD



ASHLAR



HERRINGBONE



SSB



DFL-S1



PLANKS

SPECIFICATIONS

| | |
|---------------------|------------------------------------|
| Collection Name | Layers |
| Construction | Shifted Multi-Level Loop |
| Fiber/Yarn | 100% Polypropylene (Air Entangled) |
| Colour System | Solution Dyed |
| Gauge | 1/12" |
| Stitches | 10 per inch |
| Pile Weight | 680 g/m ² |
| Average Pile Height | 4 mm ± 0.5 mm |
| Total Height | 7.0 mm ± 0.5 mm |
| Primary Backing | Non-Woven Fabric |
| Secondary Backing | E+Bac (Fibreglass Backed) |
| Tile Size | 25cm x 100cm |

PERFORMANCE

| Flammability Tests | Test Code | Standard | Test | Results |
|-----------------------|-------------|--------------|------------|------------|
| Radiant Panel | ASTM E 648 | Class II | Class II | Pass |
| Methenamine Pill | ASTM D 2859 | 7 out of 8 | 8 | Pass |
| Smoke Density | ASTM E 662 | Density ≤450 | ≤450 | Pass |
| Stability | | | | |
| Delamination | ASTM D 3936 | ≥3.0 lbs/in | 7.6 lbs/in | Pass |
| Dimensional Stability | AACHEN | ≤0.2% | ≤0.2% | Pass |
| Tuft Bind | ASTM D1335 | ≥8.0 lbs | ≥8.0 lbs | Pass |
| Anti-Static | | | | |
| Static Propensity | AATCC 134 | ≤3.5 kV | ≤3.5 kV | Pass |
| Colour Fastness | AATCC 16 E | ≥4-5 | 4-5 | Pass |
| Light | | | | |
| Rubbing/Crocking | AATCC 165 | ≥4-5 | 4-5 | Pass |
| Generic Test | | | | |
| Green Carpet (VOC) | GLP100036 | | | Accredited |



COLOUR FASTNESS



ANTI-STATIC



FIRE RESISTANT



ECO FRIENDLY



STAIN RESISTANT



UV RESISTANT

NOTE:

- All Product Specifications are averages derived from product sample testing and are subject to normal manufacturing tolerances and testing tolerances.
- Product Specifications may be changed without notice as long as product performance is not materially affected.
- Sample swatches represented in this catalogue may differ slightly from actual product due to dyelot differences.
- Chair mat is highly recommended to prevent premature wear & tear of carpet with the use of castor chairs.
- Warranty only covers the manufacturing defect on carpet and not applicable to wear & tear of usage.



LAYERS

LAYERS





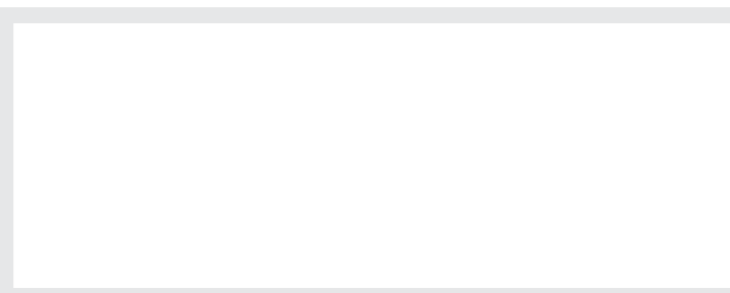
HERRINGBONE

Code: **LY30 & LY32** Colour: **Mist & Marine Mist**

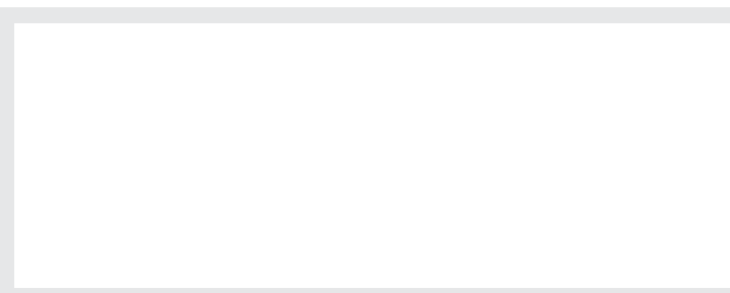


ASHLAR

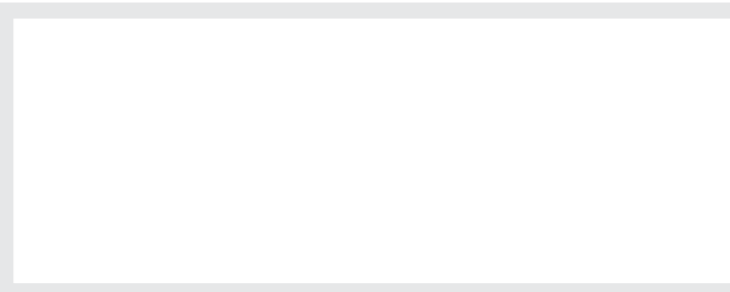
Code: **LY20** Colour: **Pebble**



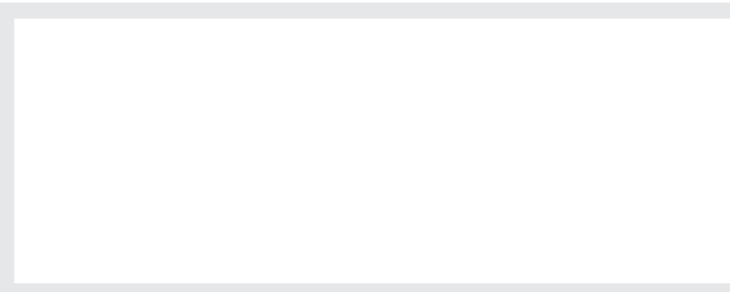
Code: **LY20** Colour: **Pebble**



Code: **LY22** Colour: **Sunlit Pebble**

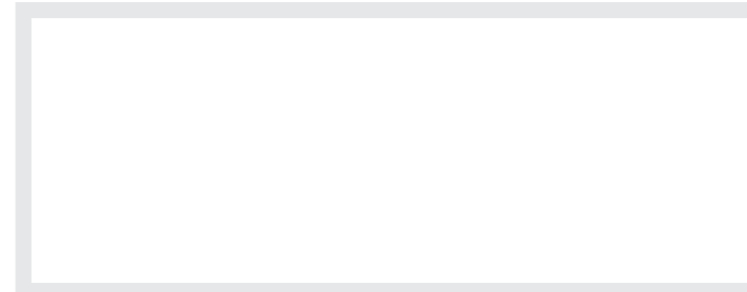
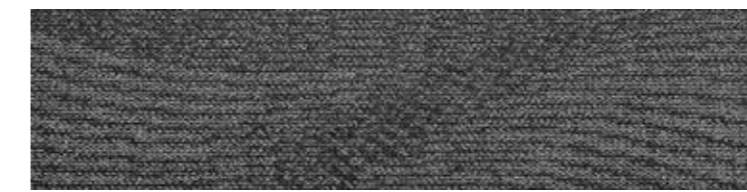


Code: **LY30** Colour: **Mist**

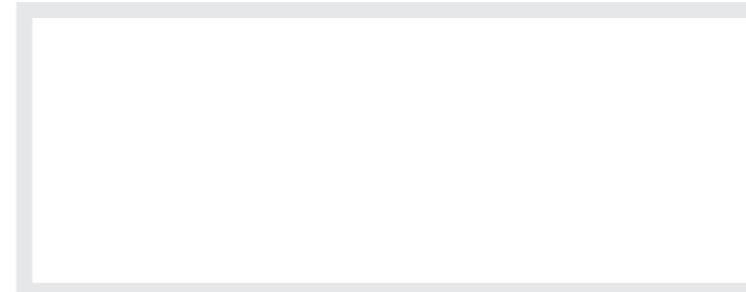


Code: **LY32** Colour: **Marine Mist**

LAYERS



Code: **LY50** Colour: **Shadow**



Code: **LY52** Colour: **Crimson Shadow**